

HIGHEST-CLASS BULLETPROOF PASSENGER CAR

ARMORED LEXUS

Base vehicles : LEXUS LS460/460L

Ballistic protection level : B-4/B-6



LEXUS LS460

LEXUS LS460L

Ultimate Safety, Thoroughly Pursued

The ARMORED LEXUS is a special protection (bulletproof/blastproof) vehicle based on TOYOTA's finest passenger car, the Lexus. Achieving both the distinguished basic functions and advanced environmental performance required in next-generation luxury cars, the LEXUS has further evolved with Securico ARMORING technology.

ARMORED LEXUS LS460/460L



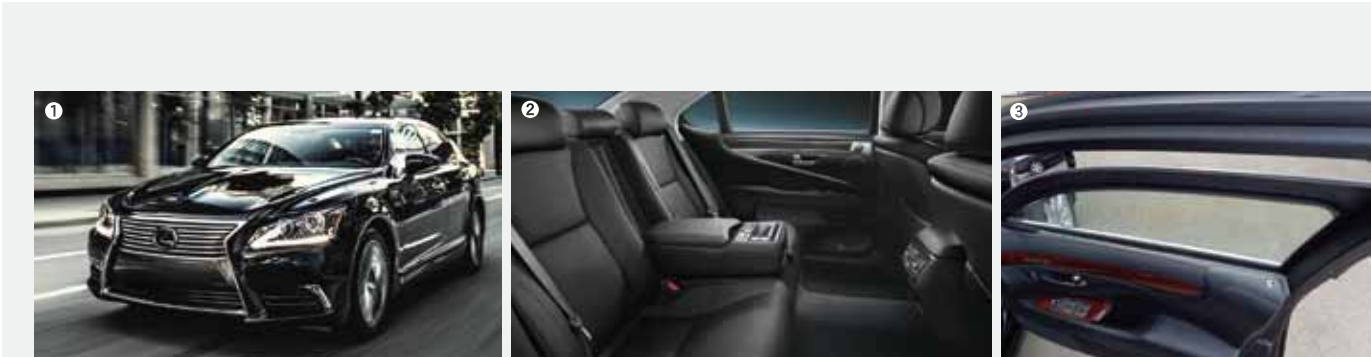
Luxury sedan type Armored Vehicle

Developed for the embassies, governmental organizations, and political and financial VIPs for any country, the ARMORED LEXUS is equipped with advanced protection that protects passengers from military assault-rifle shots and explosions, though you wouldn't know it from its outer appearance.

Levels of Ballistic Resistance

With many variations available, the provided protection level and special equipment can be selected according to your country, region, and security situation.

- ❶ **S-TYPE** Street Crime (B-4 Hand Gun)
- ❷ **V-TYPE** VIP & Anti-kidnapping (B-4 Hand Gun)
- ❸ **G-TYPE** Government, Military, Police, Ambassador (B-6 Assault rifle)
- ❹ **C-TYPE** Conflict areas, Government spec + Explosion proof (B-6 Assault rifle+ Explosion DM51)



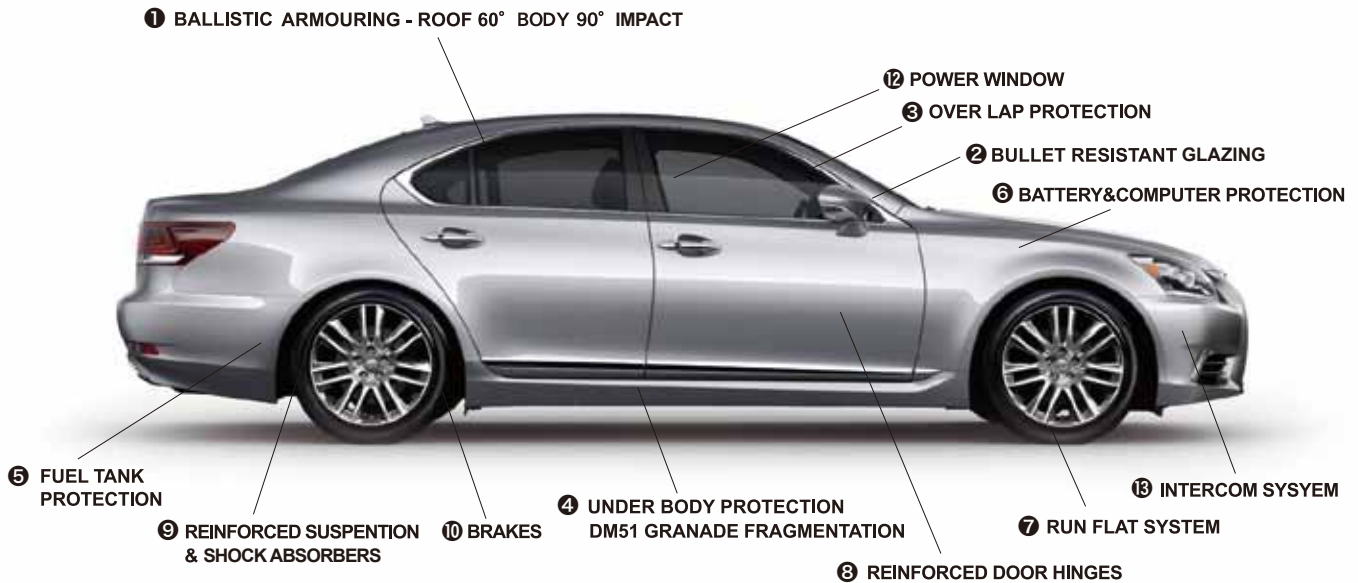
- ❶ ARMORED LEXUS (LS460) bulletproof specification vehicle
- ❷ LEXUS luxury equipment
- ❸ Front door with bulletproof specifications
- ❹ Ballistic protection process is applied to a door using "Dyneema" ultra-lightweight bulletproof fiber
- ❺ Ballistic protection process is applied to a bulkhead



	LEXUS LS460	Length × width × heigh : 5090×1875×1465mm Engine : V type 8-cylinder DOHC Total displacement : 4608L Maximum output : 385ps (283kw) /6400r.p.m. Maximum torque : 51.0kg · m (500N · m) /4100r.p.m.
	LEXUS LS460L	Length × width × heigh : 5210×1875×1465mm Engine : V type 8-cylinder DOHC Total displacement : 4608L Maximum output : 385ps (283kw) /6400r.p.m. Maximum torque : 51.0kg · m (500N · m) /4100r.p.m.

ARMORED LEXUS LS-460/460L

Ballistic Level B-4/B-6



SPECIFICATION (Standard)

- ① **Cabin** : integrated bulletproof compartment made of special steel comprising doors, a body fire wall, a roof and others.
(Incident angle : Roof 60°Others 90°)
- ② **Window glasses** : All glasses to be changed to bulletproof glasses for protection against bullets and blast
(As per Japanese specifications which meet with Japan's automobile inspection standard)
- ③ **Opening parts** : An overlapped bulletproof panel is installed in a boundary part between a door and a body
- ④ **Blast-proof floor** : Explosion-proof blanket made of Kevlar or ballistic steel. Protection against grenade blast and fragments
- ⑤ **Armoring of fuel-tanks**
- ⑥ **Dry cell batteries** or armoring of batteries and ECU
- ⑦ **Run Flat System** : Forced drive running can be maintained even if a tire goes flat in a place
- ⑧ Replacement of **door hinges** by high strength parts as well as reinforcement of pillars and door hanging sides
- ⑨ Change of a **suspension and shock absorbers** to high strength parts as well as reinforcement of mounting portions
- ⑩ Change of break pads to high strength parts
- ⑪ **Bulk Head** ※Landcruiser only (Armoring of an upper/lower divided type door is an option)
- ⑫ A driver-door window glass is vertically movable by a high power lifter
- ⑬ **Intercom** : a system which enables you to communicate with outside without opening a bulletproof window or door.

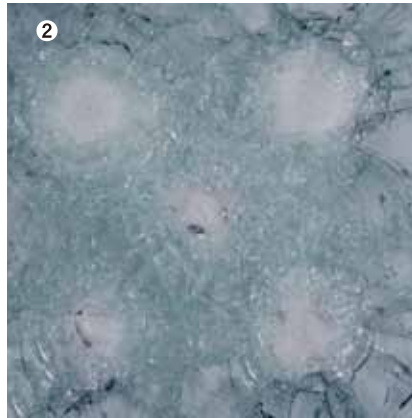
OPTIONS

- Security system : To protect valuable vehicles from theft. To prevent unmanned vehicles from illegal work and fraudulent trick.
- Strobe light & Electronic siren : To alert the people in the vicinity to abnormality. To be used for emergency escape.
- Microphone & Speaker : To notify outside with a speaker without passengers getting off a vehicle carelessly
- Automatic fire extinguishing system : A fire caused by gunshot or explosion which breaks out at engine compartment will be automatically extinguished.
- Lights out system : In the case of emergency escape or driving at night, all the lights inside and outside will be put out and a night vision goggle, etc. will come to be usable.
- Invisible infrared light : To be used together with a night vision device during night covert vehicle running
- Drive recorder : To record images of the front, rear and inside (Video 4 cH, Audio 1cH) using a DVR(Digital Video Recorder) with a built-in HDD and water- proof cameras operational both for day and night.
- GPS navigation system : To locate the car on the map and to make a route guidance to the destination using the global positioning system
- Fog lamp & Reinforced front bumper (Kangaroo bar•Ram bumper, etc) : Roof rail / Roof carrier
- Electric winch & Trailer hitch & Side step : For installation of wireless machines, wiring, antenna bracket work, and others

KEVLAR BLANKET UNDER BODY PROTECTION AGAINST DM51 HANDGRENADE FRAGMENTATION

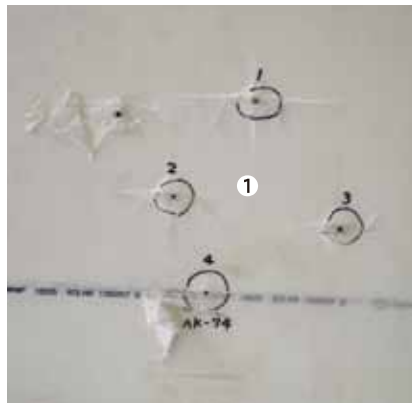
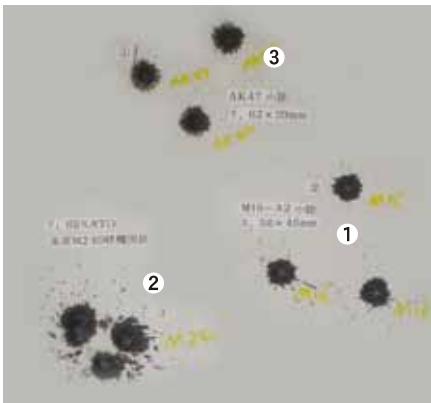


“Shooting test samples required to get “EN-B6/NIJ-III+ Ballistic Resistant Performance Certification”



1 Ballistic steel
 EN-B6 / NIJ-III
 7.62×51mm NATO (M80)
 5 shots from distance 15m

2 Ballistic resistant glazing
 EN-B6 / NIJ-III
 7.62×51mm NATO (M80)
 5 shots from distance 15m



Ballistic steel
 Private test
1 M16
 5.56×45mm M855/SS109
2 M240 Light machine gun
 7.62×51mm NATO (M80)
3 AK-47
 7.62×39mm China-ball
 FMJ Steel Jacket

Ultra-lightweight bulletproof material (DYNEEMA)
 Private test
 Distance 15m
1 AK-47
 7.62×39mm China-ball
 FMJ Steel Jacket

Real test of door

BALISTIC LEVEL

NIJ	EN	UL	BULLET	GUNS	
III	B6	4 5 7 8	 5.45×39mm MSJ RUSSIA 890m/s	 AK74	
			 5.56×45mm FMJ 960m/s	 M16series	
 7.62×51mm FMJ 853m/s	 M700 sniper				
 7.62×54mmR FMJ 835m/s	 Dragnov SVD				
	B5		 7.62×39mm MSJ 740m/s	 AK47	
IIIA II IIA I	B4	1 2 3 6	 .44 Magnum 450m/s	 Bereta  9×19mm Prabellun FMJ 390m/s	 Tokarev  7.62×25mm MSJ 420~480m/s
			 DN51 Handgranade		

NIJ 0108.01 : National Institute of Justice Ballistic Standards
 EN 1063 : European Ballistic Standards
 UL 752 : Underwriters Laboratory Ballistic Standards

Live shell test on a lightly-armored vehicle (pistol level) door by M240 (30 caliber) and AK47

